

 **ARCFOX**

Arcfox T1



The Next Generation of Electric vehicle

Performance & Battery

Peak output (HP)

95

Peak Torque (N.m)

176

CLTC cruising range(km)

425

DC fast charging (30% - 80%)

25_{MINS}



Power That Moves the Future

Experience next-level performance with instant electric acceleration, extended range, and intelligent efficiency. The T1 redefines mobility with advanced battery technology and dimensions built for comfort, agility, and presence.

Performance & Battery

Length: 4337

Height: 1572



Wheel Base 2770

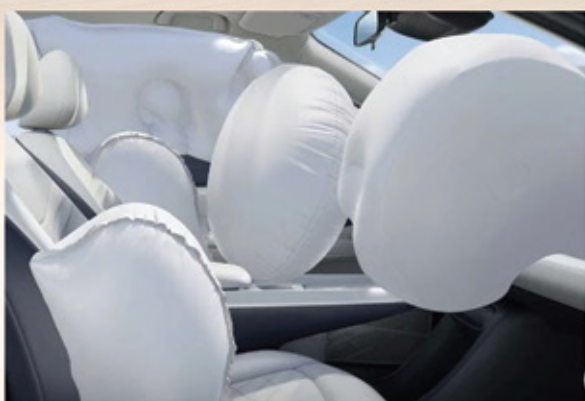
Width: 1860



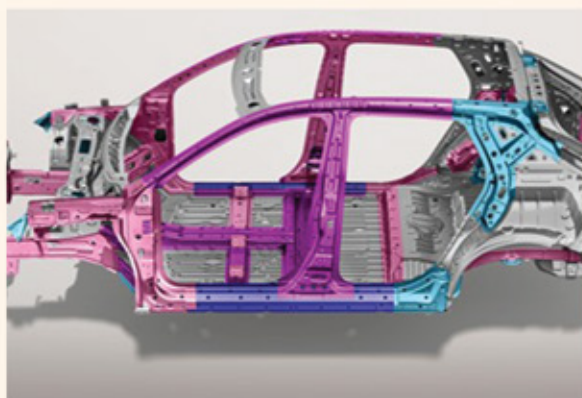
Designed with Precision



Front & Side Airbags



**TCSASR,
Traction Control System Acceleration Slip Regulation**




High-Strength Cage Body Design

The Future Drives Safe

Every detail is engineered for confidence.

The T1 ensures stability and protection no matter where tomorrow takes you.

 Exterior



Futuristic LED Lines

Design That Defines What's Next
Where the Future Has a New Shape

 **Exterior**

Blue



Green



Purple



Grey



White



Silver



Shades of Innovation

Interior



Inside the Future
The Next in Comfort & Intelligence

Specifications			
PERFORMANCE	PRO	PLUS	
Maximum Power (HP)		95	
Maximum Torque (Nm)		176	
CLTC operating range (km)		425	
Battery type		LFP	
Battery capacity (kWh)		42.4	
DC fast charging (30% - 80%)		25 mins	
7KW AC standard charging (0% - 100%)		8h	
CHASIS			
Electronic parking brake	●		●
Auto hold	●		●
Electric power steering	●		●
Top Speed (km/h)		≥140	
Tire Size and Material		17" Steel Wheel	18" Steel Wheel
SAFETY			
ABS Anti-lock braking system + EBA	●		●
EBD Electronic Brake force distribution system	●		●
ESP Electronic Stability Program	●		●
TCS Traction Control System	●		●
ASR Anti-Slip Control System	●		●
HHC Hill Hold Control System	●		●
HDC Hill Descent Control System	●		●
Front and Side Airbags	●		●
Rear Parking Sensors	●		●
EXTERIOR FEATURES			
ARCFOX Smart Key (Entry & Start)		1	
Front and Rear Interactive LED light	●		●
Auto sensing headlights	●		●
Semi-hidden door handles	●		●
Digital front LED headlight	●		●
Rain sensing wipers	-		●
AHB high/low beam switch	-		●
Panoramic Sunroof	-		●
INTERIOR FEATURES			
Seats material		PVC	
ISOFIX child seat anchor	●		●
Auto Air Conditioning	●		●
Multi-function steering wheel	●		●
Speakers	4		6
15.6 inch HD touch screen	●		●
Front and Rear USB charging ports	●		●
Driver's 6-Way Electrically Adjustable (Seat)	-		●
Front seat ventilating	-		●
OVERALL PARAMETERS			
Length × Width × Height (mm)		4337*1860*1572	
Wheelbase (mm)		2,770	
Drive Type		2WD	
Luggage compartment volume/rear seats folded down (L)		459L/1,352	

 **ARCFOX**



15277 |

ALKAN
AUTO EST